

THE COMING WRATH OF THE LAMB

Book of Revelation Seal Judgments after the Rapture

A possible explanation of the impending Super Solar Flare, Pole Shift & Asteroids

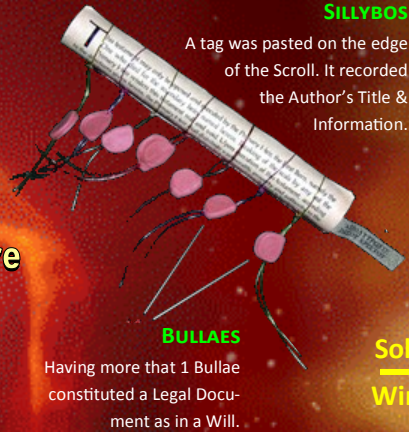
This study seeks to highlight & illustrate 3 possible impending calamities that will occur on Earth according to some interpretations of the *Book of Revelation*. They are set to occur, in the not too distant future, after the *Rapture*. These events specifically have to do with intensifying *Solar Flares*, the increasing *Near Earth Objects* (NEO) headed toward Earth & the changing *Magnetic Pole*. What is alarming is that the current & observable patterns of what is happening now with the Sun, Earth & NEOs appear to give credence to such possible apocalyptic calamities. Given the *Law of Probability*, it is not only a matter of time; of not if but when one or all these events will occur.

These astronomical scenarios presented are only suggesting a possible speculated Biblical correlation. Some interpret that the sequence of these *Scroll Judgments* of the 'Lamb' will happen nonetheless sometime in the *Last Days* but before Jesus' Return to Earth to set up His Earthly Kingdom

DIVINE JUDGMENT

This study suggests that these 3 events, in particular, appear to correlate to 3 divine *Scroll Judgments* from the *Book of Revelation*. The magnitude of such events leads one to theorize that perhaps such events could indeed constitute the 'Wrath of the Lamb' that the LORD will pour out on a rebellious 'Last Generation'—according to what the *Book of Revelation* depicts.

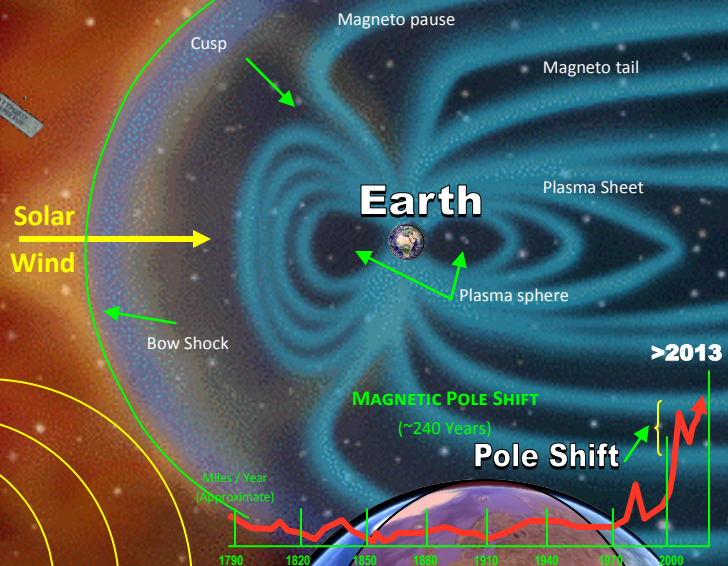
SCROLL of the 7 Seal Judgment



SILLYBOS

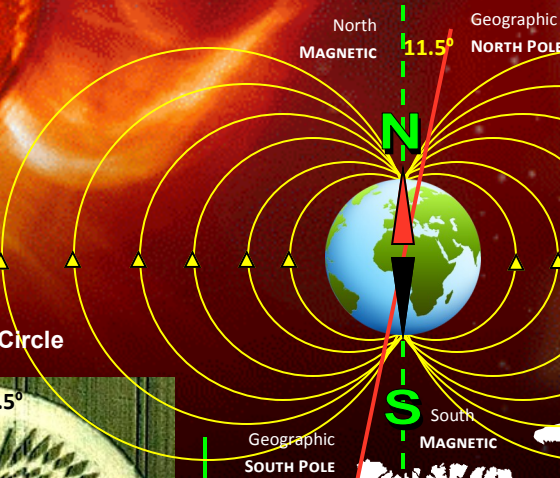
BULLAE
Having more than 1 Bullae constituted a Legal Document as in a Will.

Earth Magnetic Field

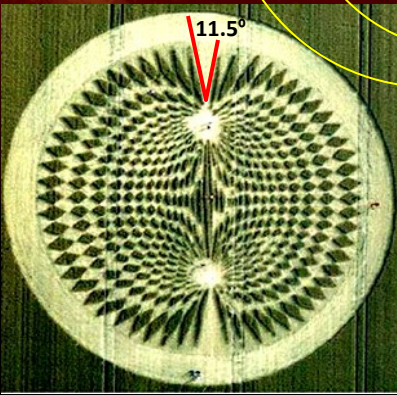


Super Solar Flare

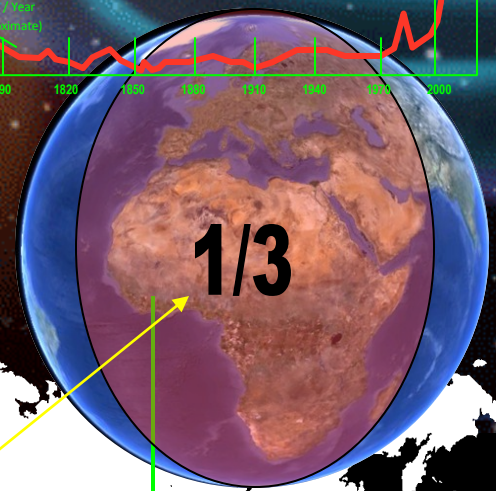
SUN



POLE SHIFT Crop Circle



A Bar Magnet Crop Circle in Wiltshire, UK & Avebury Trusloe, 2000. Perhaps it is alluding to an effect that the Earth will experience a Pole Shift of some sort.



7 SEALS (33rd Part)

- 1st SEAL-White Horse False Peace through Anti-Christ
- 2nd SEAL -Red Horse World War
- 3rd SEAL-Pale Horse Death by , famine & pestilences
- 4th SEAL-Martyrdom of Believers under Alter
- 6th SEAL-Sun Moon Stars
- Elites seek underground shelter from Wrath of Lamb
- 144,000 Jewish Evangelist Anointed to preach
- 5th SEAL-RAPTURE OF Martyrs to Heaven
- 7th SEAL-Silence in Heaven .5 Hours

7 TRUMPETS (33rd Part)

- 1st TRUMPET-33% of Trees & Grass burnt up
- 2nd TRUMPET-33% of Sea turned to 'Blood'
- 3rd TRUMPET-33% of Fresh Water turned bitter
- 4th TRUMPET-33% of Sun/Moon/Star loose light
- 5th TRUMPET-3 Woes Warning (Woe, Woe, Woe)
- 6th TRUMPET-Star Falls w/ Key to Abyss, 5 Months

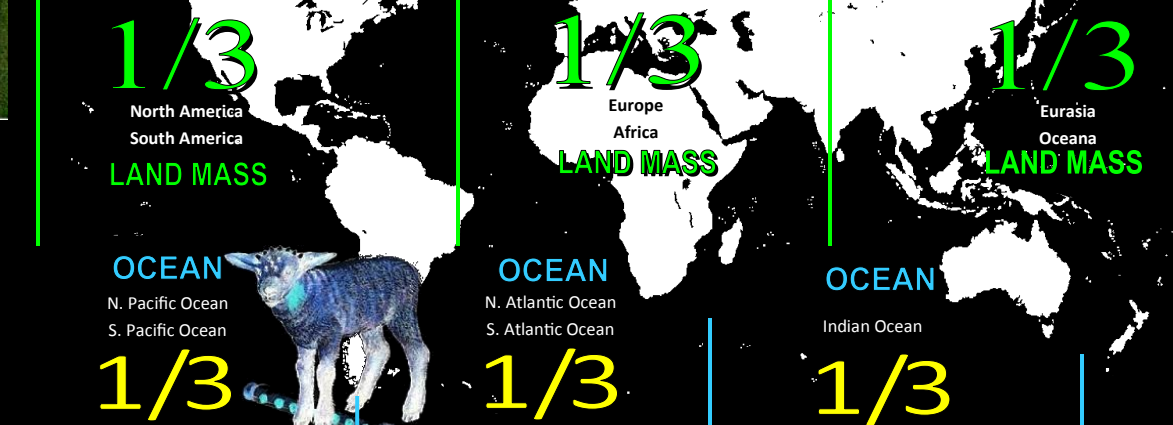
- 1st WOE
- 4 Angles loosed at Euphrates 33% of world population killed
- 2nd WOE
- Mighty Angel /small Scroll 7 Thunders; No MORE DELAY
- 7th TRUMPET-Temple Measured
- 2 WITNESS Commissioned for 1260 DAYS in Jerusalem
- Worship, Heavenly Temple Opened, Ark of Covenant

7 BOWLS (33rd Part)

- 1st BOWL On LAND: painful soars on those who took MARK
- 2nd BOWL On SEA: turned to 'blood'
- 3rd BOWL On RIVERS: turned to 'blood'
- 4th BOWL On SUN: scorching with fire & intense heat
- 5th BOWL On BEAST THRONE: Darkness
- 6th BOWL On Euphrates: Dried up for Kings of EAST (China)
- 7th BOWL On AIR: Severe Earthquake; 100lbs hailstones

A possible deciphering of the 1st century language & imagery used to describe the 3 scenarios can now be described and/or explained in modern scientific terms; these include:

- 1) a Super Solar Flare
- 2) Asteroids striking the Earth
- 3) a Pole Shift

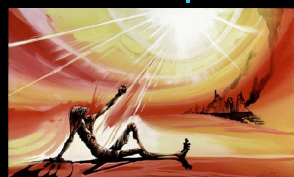


THE WRATH OF THE LAMB

It is uncharacteristic to have a depiction of a 'Lamb' with a 'wrath'. Most lambs are known for their docility. Christ was slain as a lamb led to the slaughter at His 1st Advent; He will return to execute His vengeance upon His enemies as a Lion at His 2nd Advent. It will be the time when the 'Humble Lamb' that triumphed over the raging prideful 'red dragon' at the Cross will have His vengeance in the end.

1. A SUPER SOLAR FLARE—Revelation 16-8-9

The 1st century language did its best to describe what possibly will be understood to be such a case of a *Super Solar Flare, Pole Shift & incoming Asteroid*. The 1st Trumpet Judgment deals with the Sun. This possibly correlates to the 4th Bowl Judgment of the *Wrath of the Lamb*. There will be a degree of heat so intense that it will burn up 1/3 of all the Earth's trees & grass. This clearly would describe a *Super Solar Flare* of such a magnitude as to possibly affect vegetation on at least the side the Earth is facing the Sun. At any given time, the continents make up about 1/3 of the Earth's land surface when facing the Sun.



2. ASTEROIDS—Revelation 10:11

The *Book of Revelation* clearly suggests that there will actually be 2 separate occasions in which an object from space will come crashing down on Earth. The 1st object from space is described to be as big as a 'mountain'—this could only be an inference to an Asteroid. This first one will definitely hit an ocean. According to this Trumpet Judgment cataclysm, 1/3 of the Earth's oceans will turn bitter. This includes the third part of the life therein & the destroyed shipping fleets. At any given time, the oceans facing the Sun make up approximately 1/3 of the Earth's ocean surface. The 2nd occurrence of an object coming down from space appears to be a Meteorite. The 2nd event that most likely describes a Meteorite may very well fall on land as opposed to the ocean. It appears that the description speaks of the springs of water & rivers that only land masses have & empty out into the ocean. According to this Trumpet Judgment cataclysm, 1/3 of the Earth's springs & rivers will turn bitter. It has also been scientifically verified that Meteorites are made of a composite elements that when fused together with Earth's elements make for a toxic mix that would likely contaminate that which it is exposed to.

3. EARTH POLE SHIFT—Revelation 6:17-20

A current fact is that the Earth has been experiencing a surge in volcanic eruptions & increased frequency of sizable earthquakes. In some instances, earthquakes are occurring in areas not formally known for such activity. Many hold to a belief that in part, such geothermal activities are a direct result of an impending Pole-Shift. It is an undeniable fact now that the Earth's magnetic poles are moving, and are accelerating in speed. The 6th Seal of the *Lamb's Wrath* has to do with the whole Earth or globe, perhaps as a direct result of a Pole-Shift. This description from the *Book of Revelation* would be in line with modern scientific models if such a calamity were to occur. The *Book of Revelation* speaks of an occurrence that will have all the foundations of the Earth shaken at the very core & at the same time. It will not be a localized event. This 'event' will be triggered by a *Mega-Global Earthquake* or as a result of it. The passage states that an earthquake will occur as none other since man has been on Earth. It will engulf the whole of the Planet. It thereafter depicts a horrible array of events that seem to allude to the consequences of a *Pole Shift* in that ALL the islands & mountains will be moved from their very foundation.

THE LAMB OF GOD

This rationale is also coming from the perspective that these divine & catastrophic judgments will happen in the natural world after the *Rapture*. The Bible clearly states that Christ promised that His Church would be spared from such type of 'Wrath'. This illustration will thus focus on 3 of the primary *Scroll Judgments* of Revelation that will deal with the Sun, the Earth & the Oceans. It will be a time when the vengeance of the LORD will be brought about by Jesus to a Christ-rejecting world. Christ will execute *Righteous Judgment* upon a world that has rejected His love, forgiveness & authority.

BOOK OF REVELATION

According to the *Book of Revelation*, the *Divine Wrath* of Jesus Christ is coming to Earth; upon a Christ-rejecting humanity.

These judgments, in their consummation are directed towards the last years of this current world age. This is the case because thereafter the Millennial Kingdom of Christ is to be established on Earth. As the *Last Generation* is coming into focus, we can ascertain the likelihood of the effects of such scenarios that are affecting the Sun, Earth & Oceans given what we know about science & statistical probability.



© Composition & Some Graphics by LUIS B. VEGA
vegapost@hotmail.com
www.sonoma.edu/use/v/vegalu/eschatology

SOME SOURCES:
GoogleEarth
Wikipedia.com
Art & Pictures by:
Peter Olson
Steve Alexander
S. Hill/NASA
Ted Larson